



DIECI
AUSTRALIA

ZEUS | 33.11 | 35.10 | 40.7

DIECI

ZEUS 38.10



ZEUS POWERFUL & RELIABLE

The needs on construction sites are changing. Management costs must be reduced and vehicle productivity continuously improved. Dieci meets the demands of customers with more versatile, more robust and more reliable machines that are easy to drive and operate.

The **Zeus** range consists of powerful and compact telehandlers, designed to give the user the right balance between power and agility, wherever it is necessary to handle heavy loads in confined spaces, in either the construction, mining and agriculture sectors.

Hydrostatic transmission* combined with “**inching**” **pedal command**, allows these machines to run at slow speed with engine at full throttle. *33.11 & 35.10 only.

Great power, excellent handling, precision movement control, sound proofing for absolute comfort and 2WS / 4WS / Crab steering modes.

The Zeus can be fitted with a full range of accessories, making it an **incredibly versatile** machine.

ABSOLUTE COMFORT: ITALIAN DESIGN AND STYLE

Dieci telehandlers have always been a combination of **comfort** and **functionality** which makes us stand out all over the world.

Reliability & Productivity

Dieci machines are inspired by this philosophy. A wide range of dedicated equipment with high quality components guarantees performance, even after years of work!

Advanced Telescopic Boom

Made of high resistance steel, while load sensing and flow sharing distributors allow for more simultaneous movements during operation.

Not Only Power

The Zeus responds to controls in a fluid way, with precision and promptness, thus guaranteeing exceptional work comfort in complete safety.

Perfect Climate

Semi automatic air conditioning system with 6 outlet vents allows perfect air circulation inside the cabin, openable rear glass and roof and integrated electric driver's window.

Maximum Safety

ROPS - FOPS approved cab, designed with safety cell to prevent deformation in the event of the vehicle being overturned or a heavy load falling on the cab. Dieci Telehandlers comply with AS1418.19 / 10896.1.

Deadman sensor, combined with the operator presence sensor in the seat, prevents accidental operation.

The **Load Limiter Device** analyses vehicle stability in real time and inhibits any aggravating movements when the pre-set safety limits are reached.



7.0m - 10.60m

Max Reach

4000kg

Max Capacity

93kW / 125hp

EWP AS Options Available

Pre-arrangement for man basket remote control allows the operator to operate the boom and the aerial platform directly from the basket, in total autonomy and full safety. Compliant with Australian EWP Standard AS 1418.10. *33.11 EWP model only.

Single Compensation Cylinder

Patented by Dieci - is located inside the lifting ram, ensures that the load on the boom is balanced at all times, thereby improving durability.

Inching Pedal

An essential control that allows travel speed to momentarily slow down or come to a stop while still offering maximum power to boom functions to increase precision & productivity for delicate operations.

Hydrostatic Transmission

Guarantees power, reactivity and control in manoeuvres, while a single control unit measures the optimal working parameters through in-depth diagnostics.

Comfort & Ease of Access

With soundproofing, an adjustable steering wheel (height and depth), storage compartments and various accessories such as the air suspension seat, enable operation in total comfort.

Panoramic Views

The large, curved windows of the cab offer a complete 360° outside view with uninterrupted visibility. Integrated LED worklights allow better visibility at night.

4-in-1 Joystick

4 in 1 ergonomically designed joystick with integrated forward and reverse.

Side Shift Carriage

Equipped with side shift on the boom that allows you to shift the carriage from side to side to tightly pack loads. *33.11 model only.

180L/min Hydraulic Flow Rate

Up to 180lpm hydraulic flow maximises manoeuvrability in all applications.



TECHNICAL DATA

PERFORMANCE

Machine model	33.11	35.10	40.7
Maximum capacity	3300 kg	3500 kg	4000 kg
Maximum lifting height on wheels	10.60 m	9.75 m	7.0 m
Maximum horizontal extension on wheels	7.35 m	6.45 m	3.90 m
Fork swiveling angle	146°	146°	146°
Pull-out force	5700 daN	5700 daN	5700 daN
Towing force	7300 daN	7300 daN	8200 daN
Maximum climb angle	40%	40%	60%
Unladen weight	8200 kg (13448 lb)	8000 kg (13448 lb)	7700 kg (13779 lb)

ENGINE

Brand	FPT
Nominal power	93 kW (125 HP)
@rpm	2200 rpm
Operation	4-stroke
Injection	Mechanical
Number and arrangement of cylinders	4, Vertical in line
Displacement	4485 cm ³ (274 in ³)
Consumption	230 g/kWh (378.35 lb/Hp H)

HYDRAULIC SYSTEM

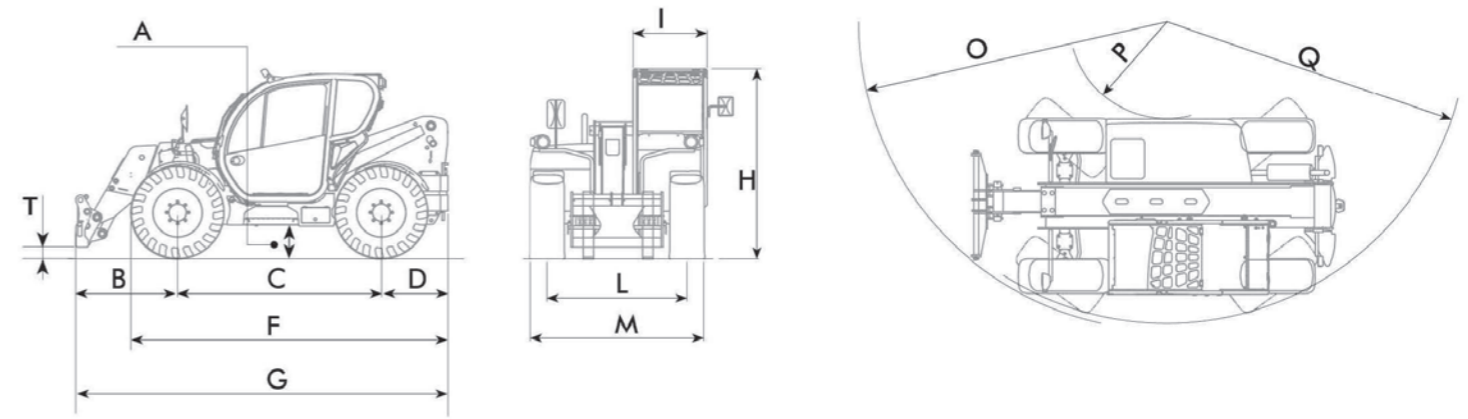
Machine model	33.11	35.10	40.7
Hydraulic pump type	Gear pump for power steering and movements	Gear pump for power steering and movements	Gear pump for power steering and movements
Hydraulic pump capacity	130 L/min	130 L/min	180 L/min
Max. operating pressure	24.0 MPa (3553 psi)	24.0 MPa (3553 psi)	25.0 MPa (3626 psi)
Distributor control	4in1 proportional joystick	4in1 proportional joystick	4in1 proportional joystick

TYRES

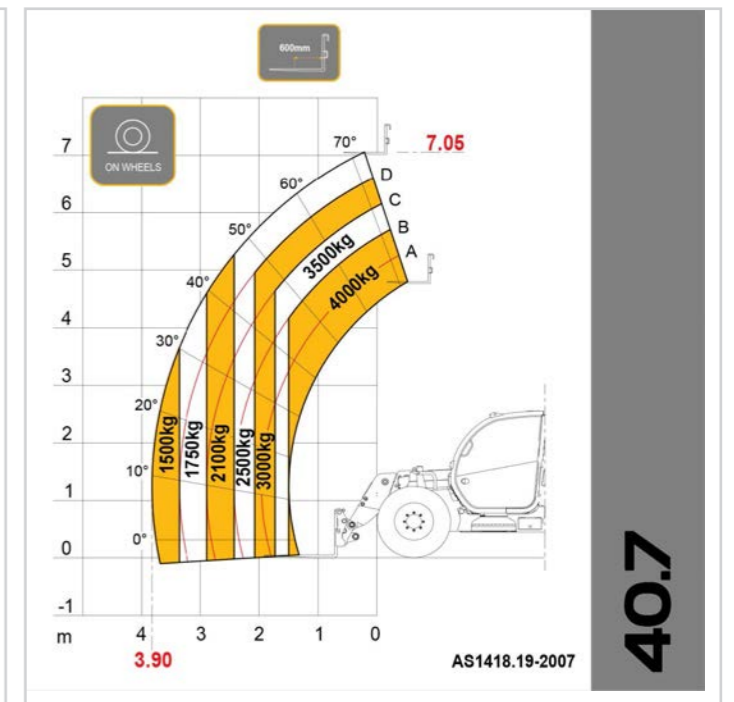
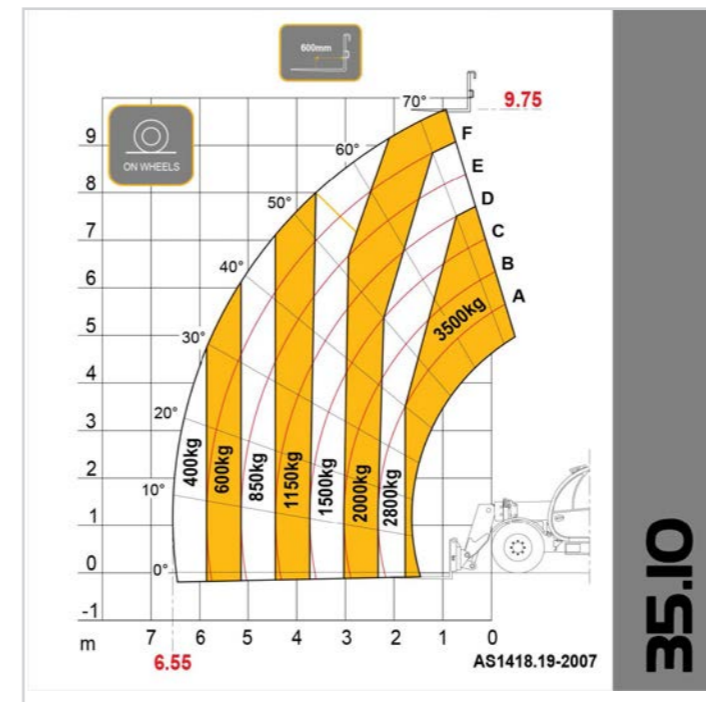
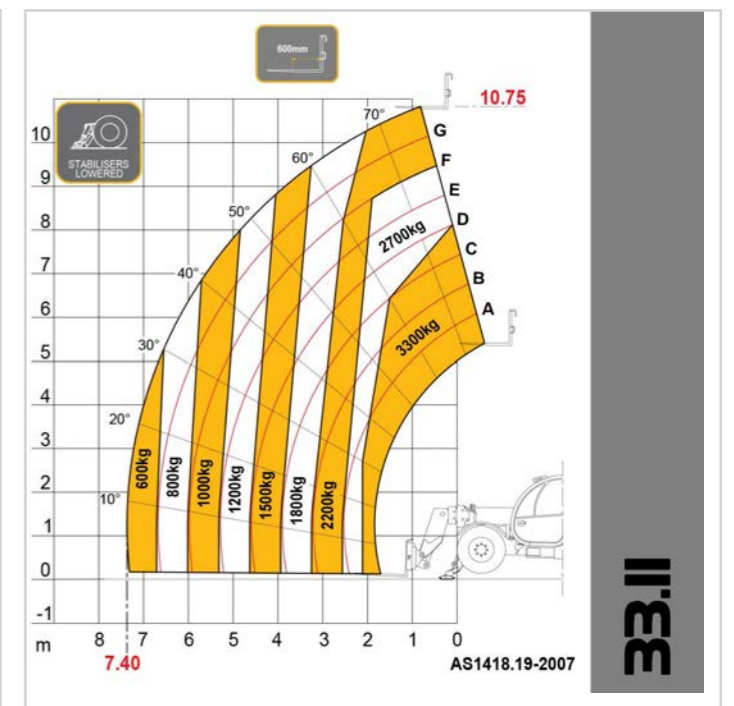
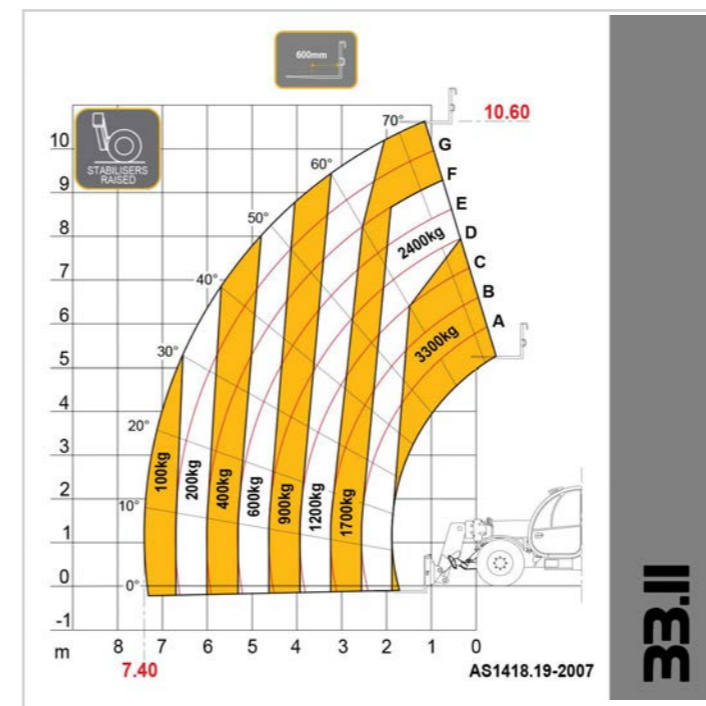
Machine model	33.11	35.10	40.7
Standard tyres	400/70x20"	400/70x20"	400/70x24"

DIMENSIONS

Machine model	33.11	35.10	40.7
A	340 mm (13.4 in)	340 mm (13.4 in)	360 mm (14.2 in)
B	1730 mm (68.1 in)	1380 mm (54.3 in)	1475 mm (58.1 in)
C	2600 mm (102.4 in)	2600 mm (102.4 in)	2750 mm (108.3 in)
D	970 mm (38.2 in)	970 mm (38.2 in)	850 mm (33.5 in)
F	4060 mm (159.8 in)	4060 mm (159.8 in)	4175 mm (164.4 in)
G	5300 mm (208.7 in)	4950 mm (194.9 in)	5075 mm (199.8 in)
H	2310 mm (90.9 in)	2310 mm (90.9 in)	2445 mm (96.3 in)
I	940 mm (37 in)	940 mm (37 in)	940 mm (37 in)
L	1780 mm (70 in)	1780 mm (70 in)	1820 mm (71.7 in)
M	2290 mm (90.2 in)	2290 mm (90.2 in)	2260 mm (89 in)
O	5150 mm (202.8 in)	3700 mm (145.7 in)	5185 mm (204.1 in)
P	950 mm (37.4 in)	950 mm (37.4 in)	1320 mm (51.9 in)
Q	3450 mm (135.8 in)	3450 mm (135.8 in)	3920 mm (154.3 in)



LOAD CHARTS





Distributed by Dieci Australia and their network of authorised dealers.

Unit 1/5 Melito Court, Prestons NSW 2170
www.dieciaustralia.com.au | info@dieciaustralia.com.au
Tel. 1300 888 479

Illustrations and photos show the standard international models and may or may not include optional equipment, accessories, customer installed or modified parts, optional parts and all standard equipment with some differences in colour and features. Machine specifications are subject to change without notice and additional load charts and machine or attachment specifications may be available on request. Please refer to the operators manual for correct machine and attachment operation.

Printed in Australia SKT Zeus August 2022

