

**DIECI**  
AUSTRALIA

POULTRY PRO | 30.7







## POULTRY PRO ENGINEERED SPECIFICALLY FOR POULTRY FARMS

The characteristics of Dieci products can be summarised in three concepts that have always been the hallmark of each vehicle: **technology, reliability and durability.**

We work every day to evolve our machines, adopting the best solutions based on research, advice and experiences with our customers. Offering a range of telehandlers designed to suit Australia's diverse agricultural environments.

Designed to specifically meet the needs of the industry with a number of features that make them ideal for use in hot poultry sheds.

Whether you're picking up birds or cleaning out sheds, the Dieci **Poultry Pro** is guaranteed to help you get the job done.

Built tough and reliable with great power, manoeuvrability, excellent handling, and sound proofing for absolute comfort. The Poultry Pro can be fitted with a full range of accessories, making it an incredibly versatile machine.

## ABSOLUTE COMFORT: MADE IN ITALY, DESIGNED FOR AUSTRALIA

Dieci telehandlers have always been a combination of **comfort** and **functionality** which makes us stand out all over the world.

### Compact Design

Fitted with smaller wheels to help operators navigate more efficiently, the compact design of these vehicles allows them to fit into sheds and under gantries, typically used for feeding and watering birds in their specially protected halls.

### Specially Designed Air Conditioning

Australian made air conditioning featuring in cabin filtration, auto reversing fans, which activate automatically every 20 minutes, and roof mounted condensing fans.

### Temperature Monitoring System

Digital temperature monitoring system with high temperature cut-out.

### Inching Pedal

An essential control that allows travel speed to momentarily slow down or come to a stop while still offering maximum power to boom functions to increase precision & productivity for delicate operations.

### Maximum Safety

**ROPS - FOPS** approved cab, designed with safety cell to prevent deformation in the event of the vehicle being overturned or a heavy load falling on the cab. Dieci Telehandlers comply with AS1418.19 / 10896.1.

**Deadman sensor**, combined with the operator presence sensor in the seat, prevents accidental operation.

**The Load Limiter Device** analyses vehicle stability in real time and inhibits any aggravating movements when the pre-set safety limits are reached.





# 6.35m

Max Reach

# 3000kg

Max Capacity

# 73 kW / 98hp

## Rollover Boomhead (146° dump rotation)

Rollover boom head at the end of the boom rotates to 146 degrees, allowing for more efficiency when emptying the bucket.

## Advanced Telescopic Boom

Made of high resistance steel, while load sensing and flow sharing distributors allow for more simultaneous movements during operation.

## Hydrostatic Transmission

Guarantees power, reactivity and control in manoeuvres, while a single control unit measures the optimal working parameters through in-depth diagnostics, displaying them in real time.

## LED Lights

Cut through the fine air-borne particles so the operator has clear vision to complete the task at hand. Designed to avoid startling poultry.

## Complete Rigidity

The frame is one of the defining characteristics of the Poultry Pro; all welds are performed by automated robots to ensure rigidity and total safety, even under high stress conditions, ensuring the machine is totally free of vibration and flexure.

## Comfort & Ease of Access

Spacious cab designed for operator comfort and ergonomics. Low height, **TCL option** for access into confined areas, adjustable steering wheel (height and depth), air suspension seat and storage compartments.

## Total Visibility

The large, curved windows of the cab offer a complete 360° outside view with uninterrupted visibility.

## Perfect Climate

Semi automatic air conditioning system with 6 outlet vents allows perfect air circulation inside the cabin, openable rear glass and roof and integrated electric driver's window.

## Double Reversing Fan

Improves airflow to maintain a clean engine bay. Keeps it clear of dust and debris, which also contributes to a lower running temperature.

## 115L Hydraulic Flow Rate

The 115lpm hydraulic flow maximises manoeuvrability in all applications.





# TECHNICAL DATA

## PERFORMANCE

Machine model	<b>POULTRY PRO 30.7 TCL</b>
Maximum capacity	3,000 kg (6614 lb)
Maximum lifting height on wheels	6.35 m (20.8 ft)
Maximum horizontal extension on wheels	3.7 m (12ft)
Fork swiveling angle	146°
Pull-out force	5700 daN (12814 lbf)
Towing force	5500 daN (12364 lbf)
Maximum climb angle	40%
Unladen weight	6100 kg (13448 lb)
Max speed	35 km/h (21.7 mph)

## ENGINE

Brand	Kubota
Nominal power	73.4 kW (98 HP)
@rpm	2600 rpm
Operation	4-stroke
Injection	Mechanical
Number and arrangement of cylinders	4, Vertical in line
Displacement	3769 cm <sup>3</sup> (230 in <sup>3</sup> )
Consumption	231 g/kWh (380 lb/Hp H)
@rpm	2600 rpm
Emission standards	Stage IIIA/Tier 3
Cooling system	Liquid
Intake	Turbo compressor

## HYDRAULIC SYSTEM

Hydraulic pump type	Gear pump for power steering and movements
Hydraulic pump capacity	115 L/min
Max. operating pressure	24.5 MPa (3553 psi)
Distributor control	4in1 proportional Joystick

## TRANSMISSION

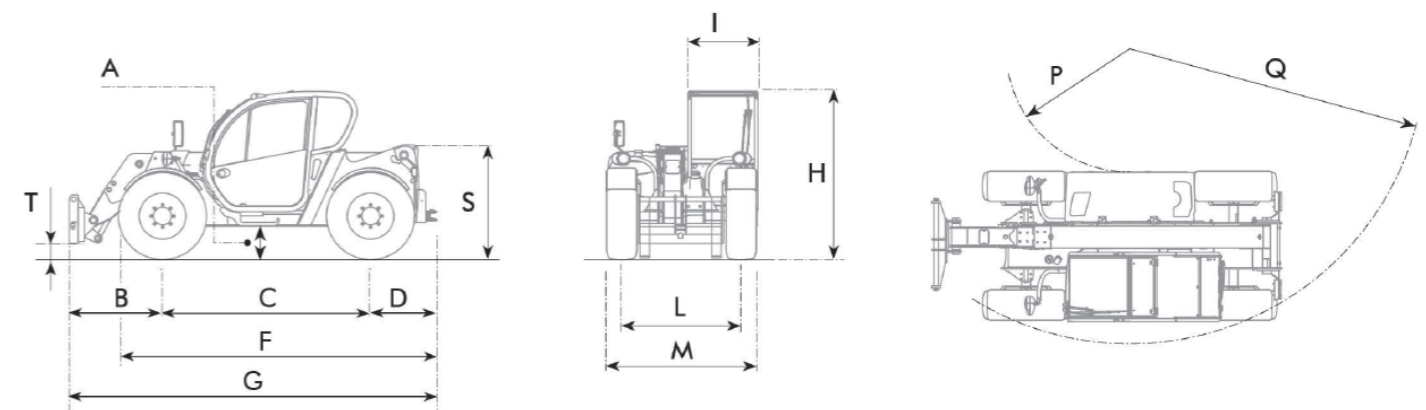
Transmission type	Hydrostatic with variable displacement pump
Hydraulic motor	Hydrostatic with continuous automatic adjustment
Reversal	Electro-Hydraulic
Inching	With inching pedal for controlled forward movement
Transmission gearbox	Servocontrolled 2-speed

## TYRES

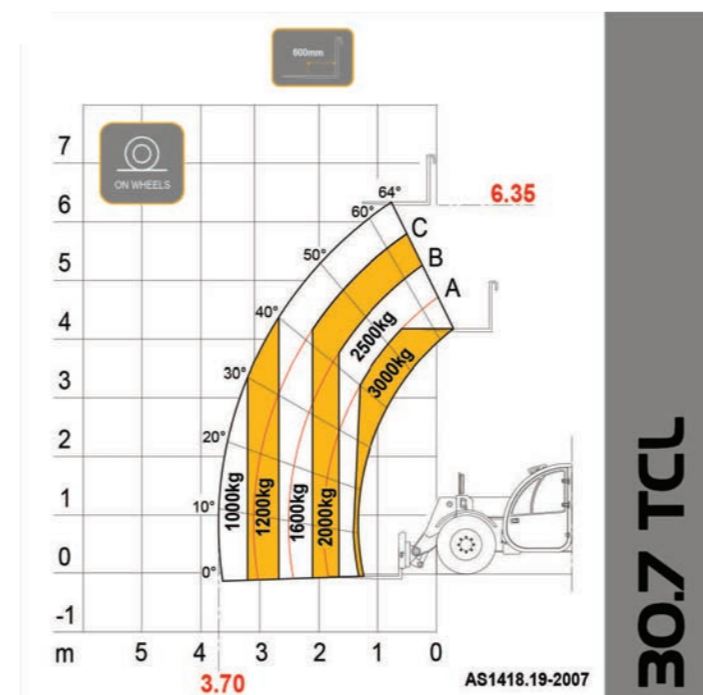
Standard tyres	12.5x18"
----------------	----------

## DIMENSIONS

Machine model	<b>POULTRY PRO 30.7 TCL</b>
A	400 mm (15.7 in)
B	1315 mm (51.8 in)
C	2800 mm (110.2 in)
D	650 mm (25.6 in)
F	3990 mm (157.1 in)
G	4765 mm (187.6 in)
H	2040 mm (80.3 in)
I	940 mm (37 in)
L	1600 mm (63 in)
M	2000 mm (78.7 in)
P	1670 mm (65.7 in)
Q	4000 mm (157.5 in)
S	1544 mm (60.8 in)



## LOAD CHARTS





Distributed by Dieci Australia and their network of authorised dealers.

Unit 1/5 Melito Court, Prestons NSW 2170  
[www.dieciaustralia.com.au](http://www.dieciaustralia.com.au) | [info@dieciaustralia.com.au](mailto:info@dieciaustralia.com.au)  
Tel. 1300 888 479

Illustrations and photos are for illustrative purposes only. They show the standard international models and may or may not include optional equipment, accessories, customer installed or modified parts, optional parts and all standard equipment with some differences in colour and features. Machine specifications are subject to change without notice and additional load charts and machine or attachment specifications may be available on request. Please refer to the operators manual for correct machine and attachment operation.

Printed in Australia SKT Poultry Pro 30.7 August 2021

