

DIECI
AUSTRALIA

AGRI PLUS | 40.7





Images are for illustrative purposes only

THE AGRI PLUS A DREAM COME TRUE

The characteristics of Dieci products can be summarised in three concepts that have always been the hallmark of each vehicle: **technology**, **reliability** and **durability**.

Extremely easy to handle, surgical precision movements, maximum power at the wheels and boom, absolute comfort and ecological. These are just a few reasons that make the **Agri Plus** the most innovative machine in its sector.

The entirely electronically controlled, ecological and high-performance motors, combined with the **EVO2 transmission**, transmit all the required power with reduced consumption.

The high efficiency steering system transmits a light driving sensation, in fact even the in the most loaded conditions the steering wheel is always soft. Manoeuvrability and compactness remain the stand-out features and the turning radius is one of the narrowest in its category.

The Agri Plus can be fitted with a full range of accessories, making it an **incredibly versatile** machine.

ABSOLUTE COMFORT: ITALIAN DESIGN AND STYLE

Dieci telehandlers have always been a combination of **comfort** and **functionality** which makes us stand out all over the world.

Reliability & Productivity

Dieci machines are inspired by this philosophy. A wide range of dedicated equipment, high quality PTO and components guarantee performance, even after years of work!

Unparalleled Manoeuvrability

The use of the **Powershift** transmission, combined with the right work mode, will enable easy, precise manoeuvres. The combined use of the electronic accelerator and inching pedal make it possible to move the telehandler forward slowly and in a controlled way, also with the boom at maximum height.

Not Only Power

The Agri Plus responds to controls in a fluid way, with precision and promptness, thus guaranteeing exceptional work comfort in complete safety.

Perfect Climate

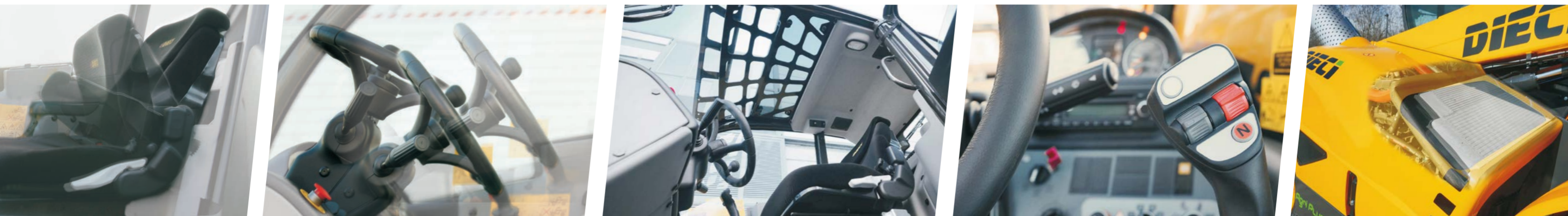
Semi automatic air conditioning system with 6 outlet vents allows perfect air circulation inside the cabin, openable rear glass and roof and integrated electric driver's window.

Maximum Safety

ROPS - FOPS approved cab, designed with safety cell to prevent deformation in the event of the vehicle being overturned or a heavy load falling on the cab. Dieci Telehandlers comply with AS1418.19 / 10896.1.

Deadman sensor, combined with the operator presence sensor in the seat, prevents accidental operation.

The **Load Limiter Device** analyses vehicle stability in real time and inhibits any aggravating movements when the pre-set safety limits are reached.



7.06m

Max Reach

4000kg

Max Capacity

93kW / 125hp



Easy Dumping (146° dump rotation)

Is specially designed to increase the operating angle, which is particularly useful when dumping with the boom raised.

Advanced Telescopic Boom

Made of high resistance steel, while load sensing and flow sharing distributors allow for more simultaneous movements during operation.

Single Compensation Cylinder

Patented by Dieci - is located inside the lifting ram, ensures that the load on the boom is balanced at all times, thereby improving durability.

180L/min Hydraulic Flow Rate

The 180lpm hydraulic flow maximises manoeuvrability in all applications.

Inching Pedal

An essential control that allows travel speed to momentarily slow down or come to a stop while still offering maximum power to boom functions to increase precision & productivity for delicate operations.

Comfort & Ease of Access

Spacious cab designed for operator comfort and ergonomics, adjustable steering wheel (height and depth), air suspension seat and storage compartments.

Panoramic Views

The large, curved windows of the cab offer a complete 360° outside view with uninterrupted visibility. Integrated LED worklights allow better visibility at night.

4-in-1 Joystick

4-in-1 ergonomically designed joystick with integrated forward and reverse.

Easy Ride System

Developed by Dieci, the sophisticated air suspension system installed on the boom (optional), drastically reduces up and down movement when travelling over rough terrain.

Double Reversible Fan

Enables remarkable fuel savings, making it faster and easier to execute cleaning operations required in dirty or dusty operations.

TECHNICAL DATA

PERFORMANCE

Machine model	AGRI PLUS 40.7
Maximum capacity	4000 kg (8818 lb)
Maximum lifting height on wheels	7.06 m (23.2 ft)
Maximum horizontal extension on wheels	3.90 m (12.8 ft)
Fork swiveling angle	146°
Pull-out force	6000 daN (13489 lbf)
Towing force	8200 daN (18434 lbf)
Maximum climb angle	60%
Unladen weight	7700 kg (16976 lb)
Max speed (referred to wheels with maximum permitted diameter)	40 km/h (24.9 mph)

ENGINE

Brand	FPT
Nominal power	93 kW (125 HP)
@rpm	2200 rpm
Operation	4-stroke
Injection	Mechanical direct
Number and arrangement of cylinders	4, Vertical in line
Displacement	4485 cm ³ (274 in ³)
Consumption	230 g/kWh (378.35 lb/Hp h)
@rpm	2200 rpm
Emission standards	Stage IIIA/Tier 3
Cooling system	Liquid
Intake	Turbo compressor after-cooler

HYDRAULIC SYSTEM

Hydraulic pump type	Variable displacement pump for power steering and movements
Hydraulic pump capacity	180 L/min (47.6 gal/min)
Max. operating pressure	25.0 MPa (3626 psi)
Distributor control	4in1 proportional Joystick

TRANSMISSION

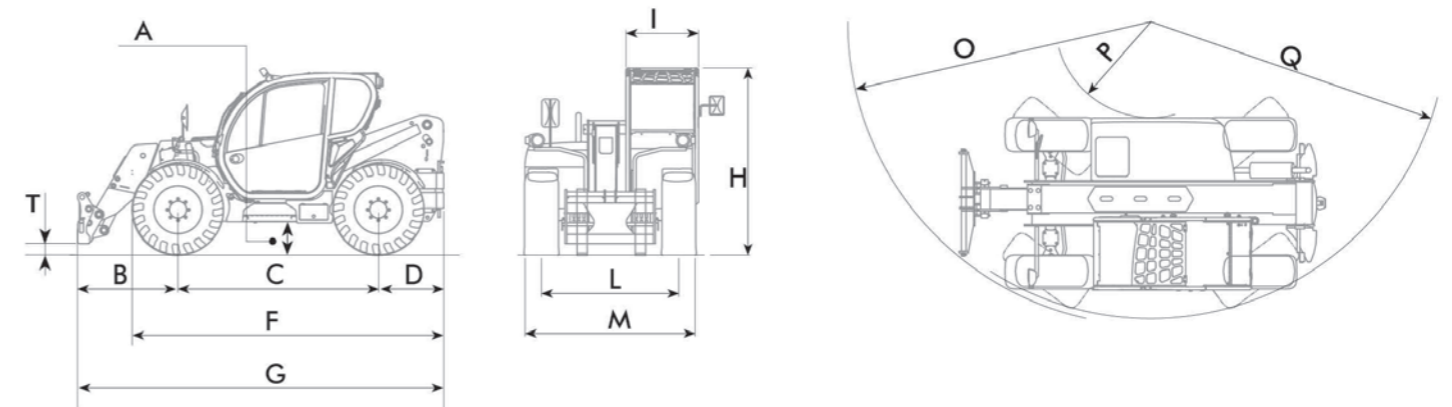
Transmission type	Torque converter with Power Shift EVO 2 shuttle with electric control
Inching	With electronic pedal for controlled forward movement
Transmission gearbox	6 forward gears / 3 reverse gears with electric control

TYRES

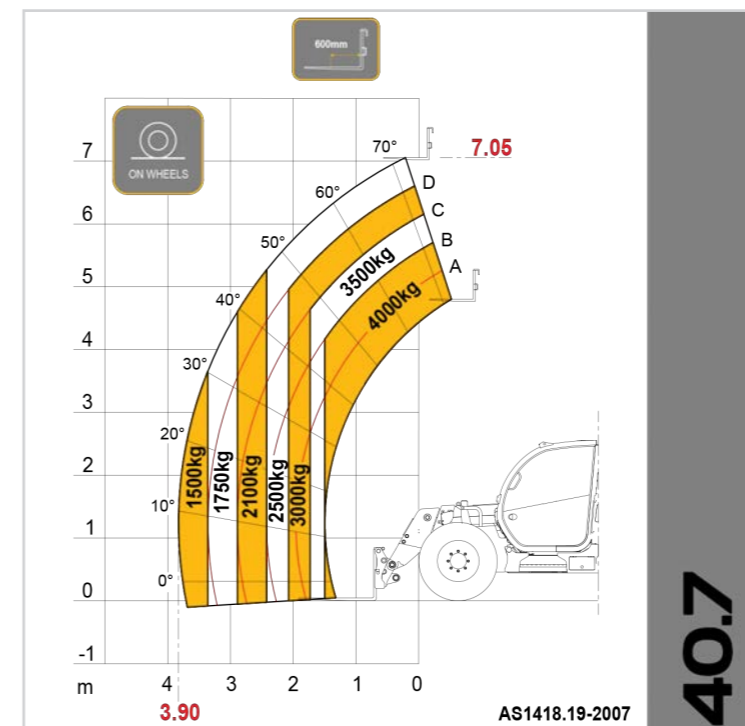
Standard tyres	400/70x24"
----------------	------------

DIMENSIONS

Machine model	AGRI PLUS 40.7
A	360 mm (14.2in)
B	1475 mm (58.1 in)
C	2750 mm (108.3 in)
D	850 mm (33.5 in)
F	4175 mm (164.4 in)
G	5075 mm (199.8 in)
H	2445 mm (96.3 in)
I	940 mm (37 in)
L	1820 mm (71.7 in)
M	2260 mm (89 in)
O	5185 mm (204.1 in)



LOAD CHARTS





Distributed by Dieci Australia and their network of authorised dealers.

Unit 1/5 Melito Court, Prestons NSW 2170
www.dieciaustralia.com.au | info@dieciaustralia.com.au
Tel. 1300 888 479

Illustrations and photos are for illustrative purposes only. They show the standard international models and may or may not include optional equipment, accessories, customer installed or modified parts, optional parts and all standard equipment with some differences in colour and features. Machine specifications are subject to change without notice and additional load charts and machine or attachment specifications may be available on request. Please refer to the operators manual for correct machine and attachment operation.

Printed in Australia SKT Agri Plus August 2021

